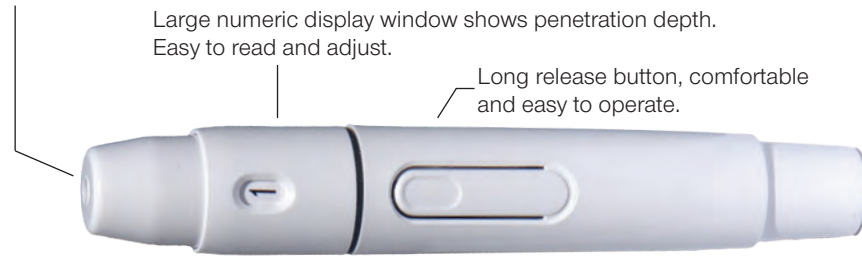


ADVOCATE[®]

USER INSTRUCTIONS LANCING DEVICE

by:  PHARMA Supply Inc.

Ergonomic design allows comfortable pressure against finger and reduces the stress of use.
Simple and easy to use.

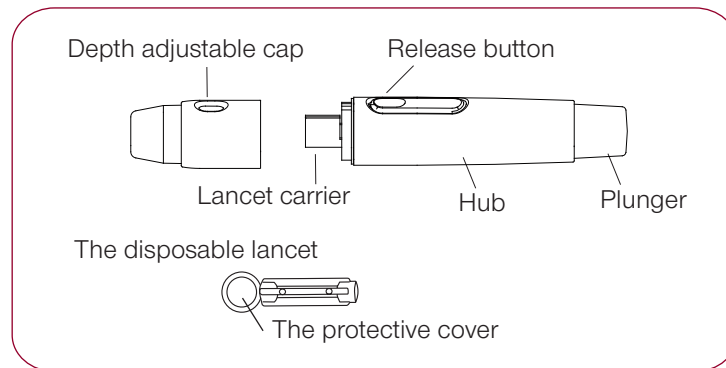


Patented safety switch design:

When the cap is off, only the loading lancet and lancet ejection functions are available.
When cap is on, the cocking and triggering, functions are available, and the lancet ejection function is disabled to prevent accidental pricking.

Patented feature:

One hand-lancet ejection feature.



Special Features

- **Safety Switch design:** When the Depth Adjustable Cap is off, the trigger will automatically lock to prevent user from being pricked. If you do not intend to start the test, you can eject the used disposable lancet with one hand by pushing the plunger with your thumb. (Please refer to Step 9 below.)
- When the cap is on, the lancing device will lock the lancet eject function to prevent the lancet from being removed.
- Stable and sophisticated structure design ensures this lancing device creates minimal vibration. Pricking the skin with the lancet is steadier, with virtually no feeling of pain. It should lower the stress level for users, allowing people to recover easier from the frequency of tests which is recommended by HCPs.
- A stylish, slim and ergonomic design is both comfortable and easy to learn, even for first time users.
- Numeric indicator in the Depth Adjustment Cap is easy to read and adjust the disposable lancet depth penetration for your type of skin.

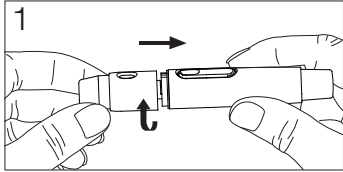
Cautions

- Be careful not to prick yourself from the exposed lancet whenever the Depth Adjustable Cap is off and the loaded lancet is exposed.
- The lancing device is intended for one user. To avoid exposure to contaminants, do not use the lancing device on multiple users.
- For safety and to prevent cross-contamination, always discard used disposable lancets in an appropriate puncture-proof or biohazard container.
- Follow the User's Manual. Please do not disassemble the lancing device under any condition.
- The lancing device contains small parts which could result in choking if placed in your mouth. Please store properly *and keep away from young children.*
- When the cap is on and the lancing device is loaded, the safety switch will lock the cap. Please press the release button before removing the cap.

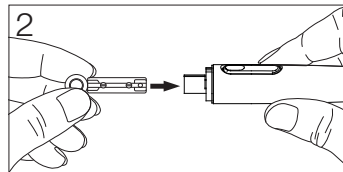
Instructions for use

Please clean your hands with soap and warm water; dry them thoroughly. Warming your hands will help in obtaining a blood sample. Follow the numbered steps below.

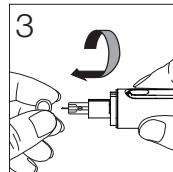
A. Fingertip



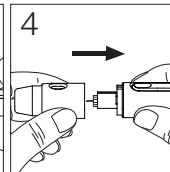
1. Hold the Depth Adjustable Cap in one hand and hold hub in the other hand, twist off the Depth Adjustable Cap.



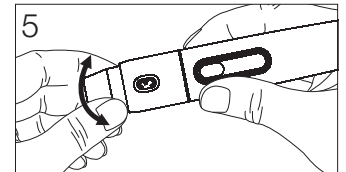
2. Insert a new disposable lancet firmly into the lancet holder.



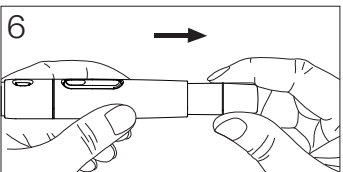
3. Twist off the protective cover of the disposable lancet and set aside.



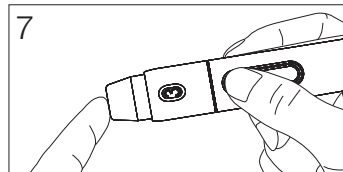
4. Replace the Depth Adjustable Cap.



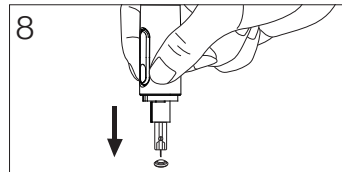
5. Select a penetration depth by rotating the top portion of the Depth Adjustable Cap until the correct number appears in the window. Settings are based on skin type; "1-2" are for soft or thin skin; "3-4" are for average skin; "5-6" are for thick or calloused skin.



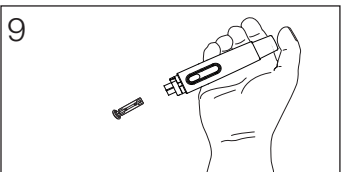
6. Hold the hub in one hand and pull on the plunger with the other hand. Release the plunger; it will go back to its original position. The device is now set.



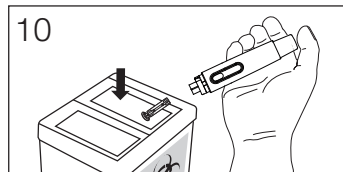
7. Place the lancing device against the soft side of the fingertip. The better puncture sites can be found on the middle or ring fingers.



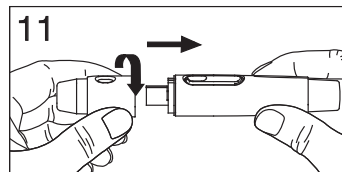
8. Pull off the Depth Adjustable Cap. Stick the lancet tip into the protective cover without touching the used disposable lancet.



9. Hold the lancing device body with one hand, push the plunger using the thumb to eject the used disposable lancet.



10. Discard the disposable lancet into a proper puncture-proof or biohazard container.

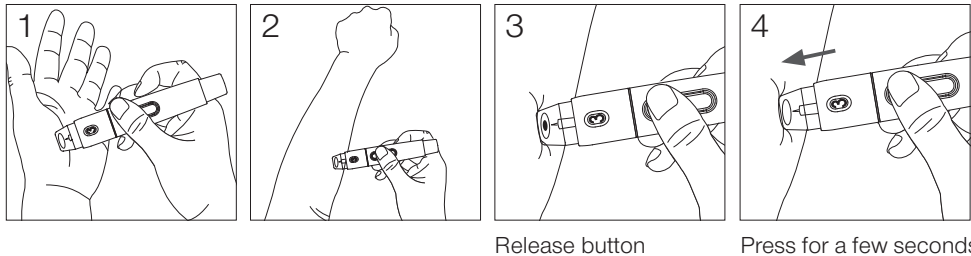


11. Replace the Depth Adjustable Cap after finishing the test.

B. Palm or forearm for alternative site test (Optional clear cap required.)

For more information, contact us at 1-866-373-2824)

- (1) Grasp the clear cap and follow step 1 to step 4.
- (2) Massage the puncture area of palm or forearm for few seconds.
- (3) Immediately after massaging the puncture area, press and hold the lancing device against your skin.
- (4) Press the release button.
- (5) Keep holding the lancing device against palm or forearm for 2-3 seconds to allow the blood drop to develop.
- (6) Follow step 8-10 on page 2 to discard the used disposable lancet.



Cleaning

Use a clean damp cloth to wipe the outside of the lancing device.

To avoid rusting the internal spring, *do not submerge the device in water.*

Warranty

Advocate® warrants that your lancing device is free from defects for (1) year from the date of purchase. Any defects in materials or workmanship of this lancing device will get repaired or replaced free of charge. This warranty does not apply to misuse, tampering or physical abuse of this product in any way. This warranty provides you legal rights under law.

Customer Service

Please read all the instructions to make sure you are performing all the steps correctly. You are always welcome to contact us by calling: 1-866-373-2824 (7 days a week, 24 hrs a day).

Distributed by: Diabetic Supply of Suncoast, Inc., PO Box 2102, Vega Alta, PR 00692
Toll-free: 1-866-373-2824 | www.AdvocateMeters.com | (7 days a week, 24hrs a day)